

5kA High Performance Surge Protection Device



Rev.: Draft Version X2, 20200604



CE IP67



■ Features

- Series connection style
- IEC61643-11 component assemblies
- Line to Ground & Line to Line protected
- 5kA maximum discharge current (Imax), 8/20μs
- Thermally protected
- Double insulation cable wire
- LED status indicator
- IP67 design for indoor or outdoor installations
- Suitable for LED driver surge protection with class I insulation
- 5KV surge protection capability

■ Applications

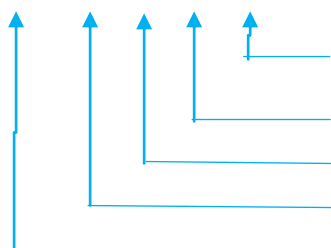
- Outdoor and commercial LED
- Roadway lighting
- Traffic lighting
- Digital signage
- Wall wash lighting
- Parking garage/lot lighting
- Flood lighting
- Tunnel lighting
- Street lighting

■ Description

The KSP-05GI-277P LED Power Supply SPD is mainly composed of MOV, GDT and flame-retardant shell. It has protective functions of surge, overflowing, thermal (thermal fusing) and flame retardant, used for the power supply protection of LED road lamp.

■ Model Encoding

KSP-05G-I-277-P



- P: Parallel connection
- S: Series connection
- Operating Voltage
- Built-in LED indication
- 5kA (Nominal Discharge Current)
- Kfuse Surge Protection Module

SPD

5kA High Performance Surge Protection Device



Rev.: Draft Version X2, 20200604

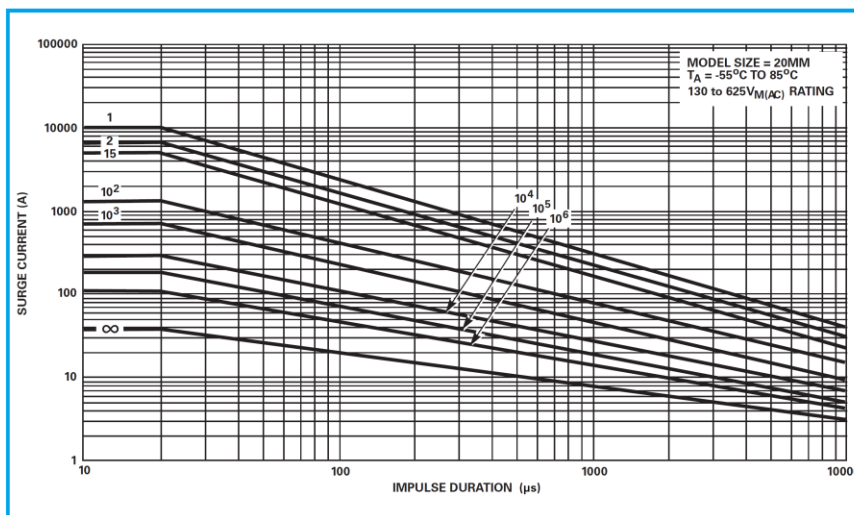
Electrical Performance

Catalog No.	Operating Voltage (VAC)	MCOV/UC (VAC)	Maximum Discharge Current I _{max} (A)	Nominal Discharge Current I _n (A)	MLV (V)	U _p (V)
KSP05GI-277P	277	320	10000	5000	L-N: 1260 L-G: 1260 N-G: 1300	L-N: 1400 L-G/PE: 2400 N-G/PE: 2200

Absolute Maximum Ratings

Continuous:	KSP05GI-277P	Units
Steady State Applied Voltage:		
Max AC Voltage Range (VM(AC)RMS)	320	V
Continuous Current	3.5	A
Transient:		
Maximum Discharge Current, 8/20μs Waveform (I _{max})	10000	A
Nominal Discharge Current, 8/20μs Waveform (I _n)	5000	A
Operating Ambient Temperature Range (T _A)	-40 to +85	°C
Storage Temperature Range (TSTG)	-40 to +85	°C
Isolation Voltage Capability (When the thermal disconnect opens)	600	V
Insulation Resistance	> 1000	MΩ

Repetitive Surge Capability



Pulse Rating (8x20μSec)	
Strikes	Surge
1	10,000A
2	7,000A
15	5,000A
100	1,500A
1,000	700A

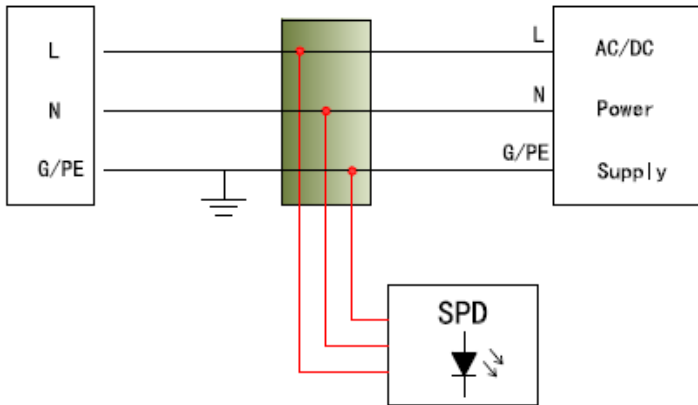
SPD

5kA High Performance Surge Protection Device

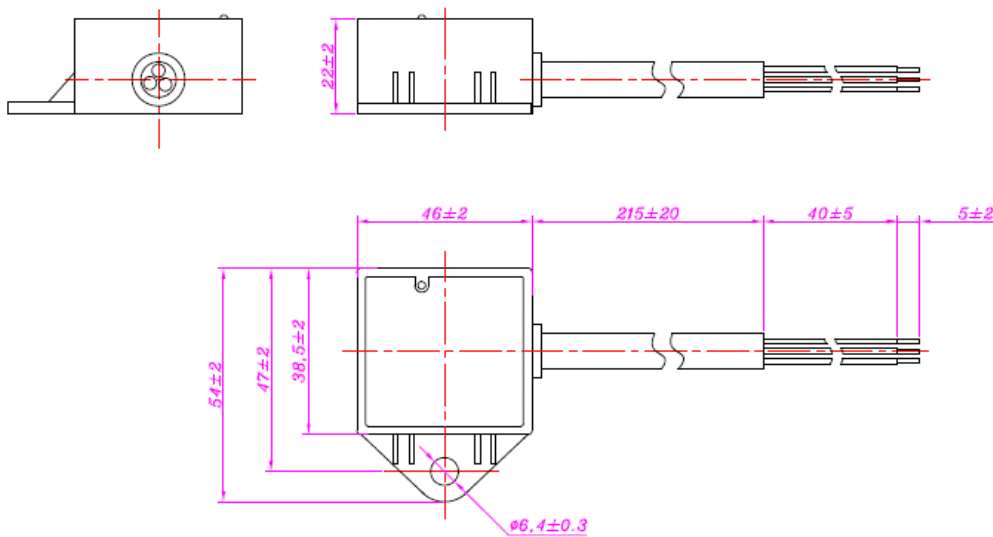


Rev.: Draft Version X2, 20200604

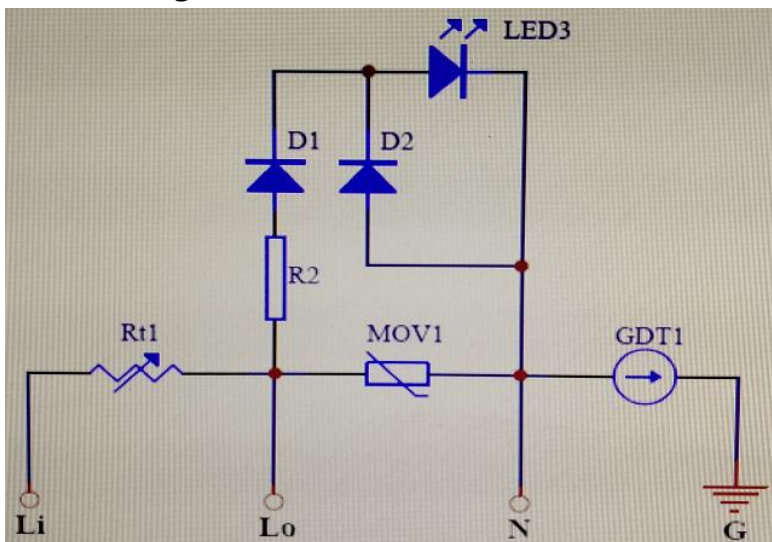
Application/Installation Schematic



Mechanical Dimension.(unit:mm)



Circuit Diagram



SPD



CE IP67



■ 产品特点

- 并联风格
- IEC61643-11 组件装配
- 线对线和线对地保护
- 8/20 μ s 5kA 电流浪涌保护
- 热过载保护
- 双绝缘电缆线
- LED 指示灯
- IP67 室内或室外安装的设计
- 适用于 T2 T3 绝缘的 LED 浪涌保护器
- 10KV 电压浪涌保护

■ 产品运用

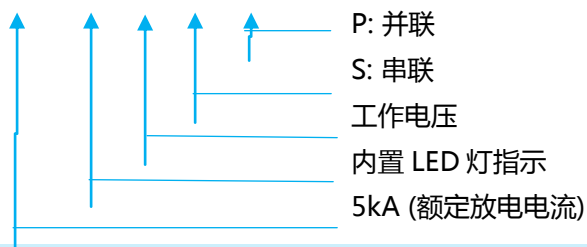
- 户外及商用 LED
- 道路照明
- 交通照明
- 数字电子标牌
- 洗墙照明
- 停车场照明
- 泛光照明
- 隧道照明
- 街道照明

■ 产品说明

KSP05GI-277P LED 电源浪涌保护器主要由压敏电阻，气体放电管，温度保险丝和阻燃外壳组成。具有喘振，溢流，热熔和阻燃保护功能，用于 LED 灯粉末防护。

■ 模型编码

KSP-05G-I-277-P



金华防雷浪涌保护器

电气性能

料号	额定电压 (VAC)	最大交流电压 (VAC)	最大放电电流 I _{max} (A)	额定放电电流 I _n (A)	MLV (V)	U _p (V)
KSP05GI-277P	277	320	10000	5000	L-N: 1260 L-G: 1260 N-G: 1300	L-N: 1400 L-G/PE: 2400 N-G/PE: 2200

额定参数

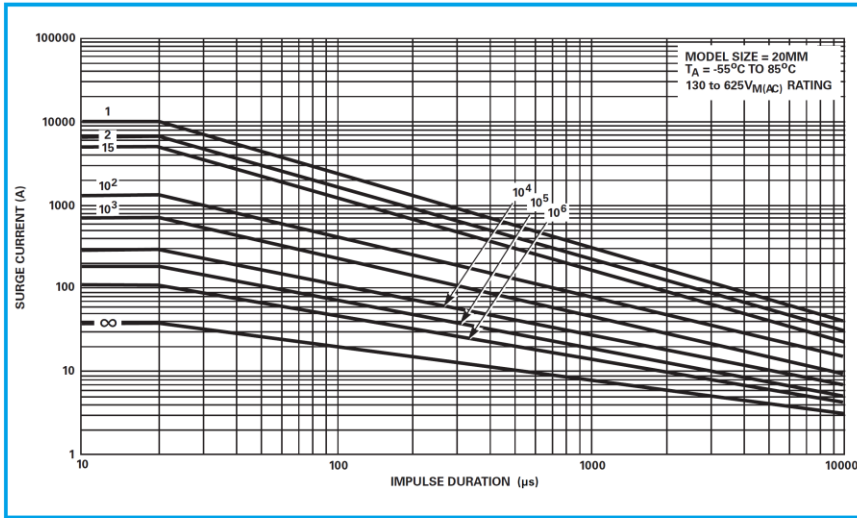
	KSP05GI-277P	单位
持续的稳态加压 :	/	/
最大交流电压 (VM(AC)RMS)	320	V
持续电流	3.5	A
瞬态的:	/	/
最大放电电流, 8/20 μ s 波形 (I _{max})	10000	A
额定放电电流, 8/20 μ s 波形 (I _n)	5000	A
工作环境温度 (TA)	-40 to +85	°C
储存温度 (TSTG)	-40 to +85	°C
隔离电压能力 (当热熔断器断开时)	600	V
绝缘电阻	> 1000	M Ω

重复的过载能力

5KA 高性能浪涌保护器

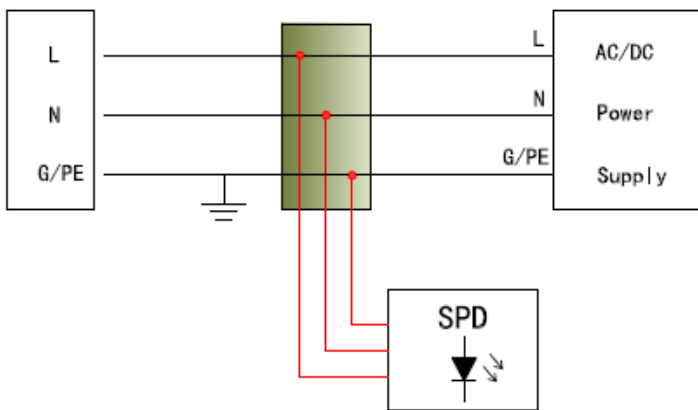


Rev.: Draft Version X2, 20200604

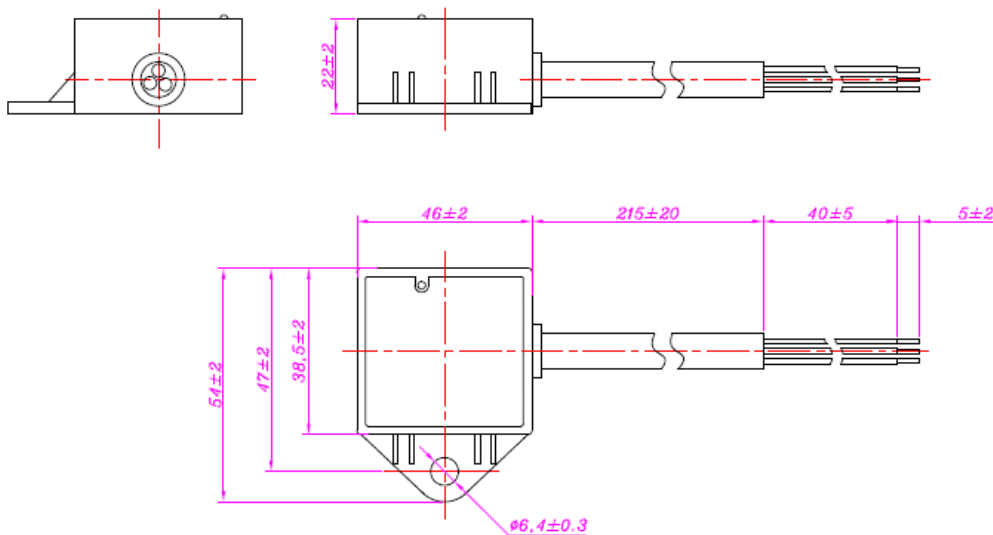


Pulse Rating (8x20µSec)	
Strikes	Surge
1	10,000A
2	7,000A
15	5,000A
100	1,500A
1,000	700A

安装示意图



产品尺寸.(单位:mm)



SPD

5KA 高性能浪涌保护器



Rev.: Draft Version X2, 20200604

电路图

